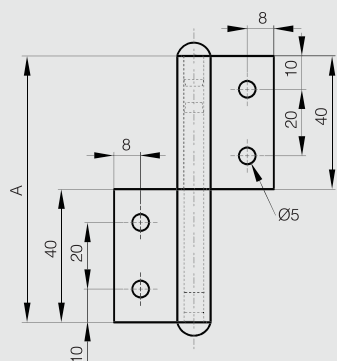




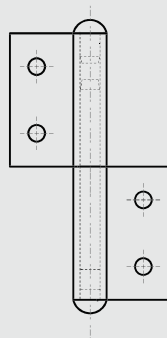
Flag hinge without washer - drilled - flat knuckle



Part number	Material	Finish	A	B	C	D	Note	Weight (g)
12-1-4258	304 stainless steel	raw	80	48	2	6	type 1	76
12-1-4285	304 stainless steel	raw	80	48	2	6	type 2	76



12-1-4258



12-1-4285

