

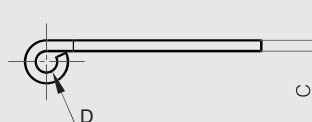
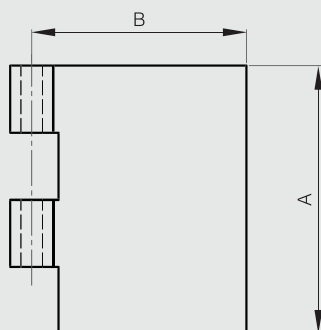
Half leaves for Modulo hinges - thickness 5 mm

Leaves can be combined together and with either:

- a 10 mm diameter expanded pin (BG) (part numbers 27-1-3822, 27-1-3825),
- a 10 mm diameter headed pin (BT) (part numbers 27-1-3828, 27-1-3831),
- with a plug (part numbers 27-1-3834, 27-1-3837).



Part number	Material	Finish	A	B	C	D	Weight (g)
50-1-4001	steel	raw	120	30	5	10	211
50-1-4002	steel	raw	120	40	5	10	258
50-1-4003	steel	raw	120	50	5	10	305
50-1-4004	steel	raw	120	60	5	10	352
50-1-4005	steel	raw	120	80	5	10	447
52-1-3781	304 stainless steel	deburred	120	30	5	10	211
52-1-3782	304 stainless steel	deburred	120	40	5	10	258
52-1-3783	304 stainless steel	deburred	120	50	5	10	305
52-1-3784	304 stainless steel	deburred	120	60	5	10	352
52-1-3785	304 stainless steel	deburred	120	80	5	10	447



Half leaves for Modulo pin hinges - thickness 3 mm

Leaves can be combined together and with either:

- a 6 mm diameter expanded pin (BG) (part numbers 27-1-3820, 27-1-3823),
- a 6 mm pin in POM (part number 27-1-3938),
- a 6 mm diameter headed pin (BT) (part numbers 27-1-3826, 27-1-3829),
- with a plug (part numbers 27-1-3832, 27-1-3835).



Part number	Material	Finish	A	B	C	D	Weight (g)
12-1-3941	steel	raw	40	20	3	6	25
12-1-3866	steel	raw	40	30	3	6	37
12-1-3867	steel	raw	40	50	3	6	56
12-1-3868	steel	raw	40	80	3	6	84
12-1-3943	steel	raw	40	120	3	6	126
12-1-3942	304 stainless steel	deburred	40	20	3	6	25
12-1-3869	304 stainless steel	deburred	40	30	3	6	37
12-1-3870	304 stainless steel	deburred	40	50	3	6	56
12-1-3871	304 stainless steel	deburred	40	80	3	6	84
12-1-3944	304 stainless steel	deburred	40	120	3	6	126

